



Albany Equestrian Centre EMERGENCY EVACUATION PLAN

In the interests of public safety, the Albany Equestrian Centre has developed its Emergency Evacuation Plan which provides guidelines for the emergency evacuation and urgent immediate exiting from an area that contains an imminent or an ongoing threat.

The Albany Equestrian Centre Emergency Evacuation Plan is a course of action in diagrammatic form, developed to mitigate damage and danger to users of the Centre.

This evacuation plan lays out how to exit Albany Equestrian Centre buildings (Diagrams 2 & 3) safely during an emergency and designates a safe meeting area (Diagram 1) outside the buildings.

In case of an emergency, there is a need to exit as quickly as possible.

Primary emergency evacuation routes and exits for each building are shown on the building diagrams (Diagrams 2 & 3), together with disabled access facilities, and the location of fire extinguishers.

The safe assembly area (Safe Evacuation Area 1) is shown on Diagram 1, and is that area currently utilised for truck/float parking.

On hearing the emergency alarm, all persons on the Albany Equestrian Centre grounds and in the Albany Equestrian Centre buildings are to proceed immediately to the designated Safe Evacuation Area No.1.

All members and users of the Albany Equestrian Centre should be familiar with the A.E.C. Emergency Evacuation Plan.



Assembly Area (No.1)
Albany Equestrian Centre

Clubrooms

Indoor Arena

(Diagram 1)

Albany Equestrian Centre - Indoor Arena

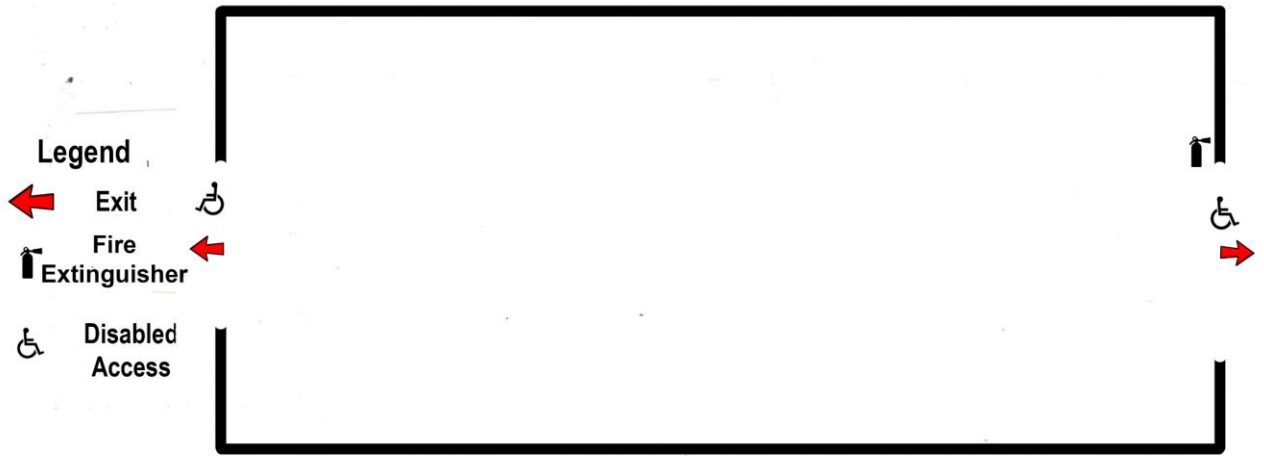


Diagram 2

Albany Equestrian Centre - Clubrooms

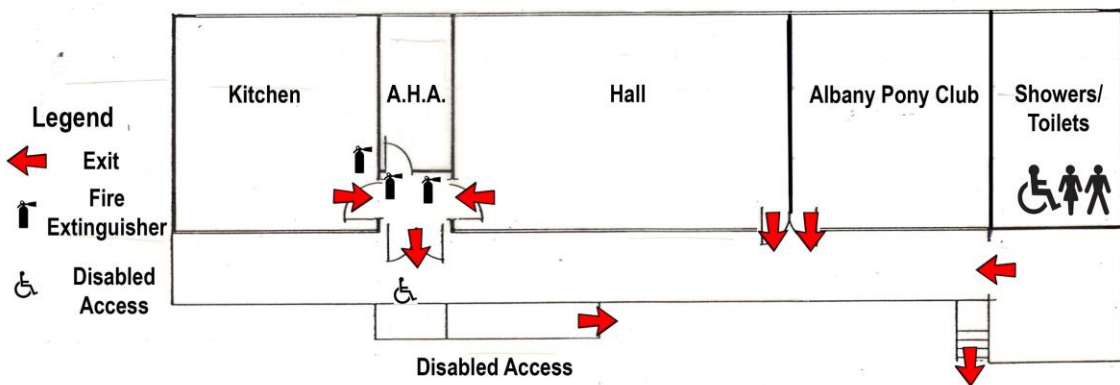


Diagram 3